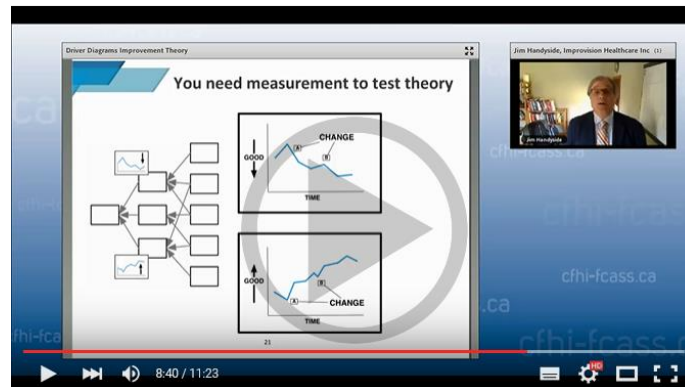


CFHI Quality Improvement Primer: Driver Diagrams: Improvement Theory

Watch the Primer: <https://youtu.be/20IIIg4A2FA>

(Duration: 11:53)



Faculty

Jim Handyside, Director and Principal, Improvisation Healthcare Inc., Lucan, Ontario; and CFHI Faculty Member

Abstract

The driver diagram is a tool to facilitate the development, use, refinement and communication of improvement theory. Improvement theory reflects the best available evidence, experience, and analysis of the current system and local organizational context. The driver diagram is similar to other planning, but should not become a composite of a work breakdown structure. Tests of change (Plan-Do-Study-Act, PDSA) follows from ideas formulated based on improvement theory. The driver diagram is a structure for learning and should be continually refined based on new understanding that emerges. Driver diagrams can serve as an effective communication tool, engaging a shared understanding of the reason change is being planned, tested and implemented. Following successful improvement, the driver diagram should be part of a change package to support efforts to spread improvement. If improvement is unsuccessful, theory should be critically reviewed and modified.

Objectives

- To become familiar with driver diagrams;
- To recognize the input required for the development of improvement theory; and
- Differentiate the driver diagram from other similar planning and improvement tools.

Additional Resources

- Presentation slides: <http://www.cfhi-fcass.ca/sf-docs/default-source/on-call/primer-videos/Driver-Diagram-Primer-Presentation-E.pdf>
- Bennett B & Provost L. 2015. What's Your Theory? Driver diagram serves as tool for building and testing theories for improvement. Quality Progress: 37-43. Available at: http://www.apweb.org/QP_whats-your-theory_201507.pdf
- Davidoff F, Dixon-Woods M, Leviton L, et al. 2015. Demystifying theory and its use in improvement. BMJ Quality & Safety; 24: 228–238. Available at: <http://qualitysafety.bmj.com/content/24/3/228.full>